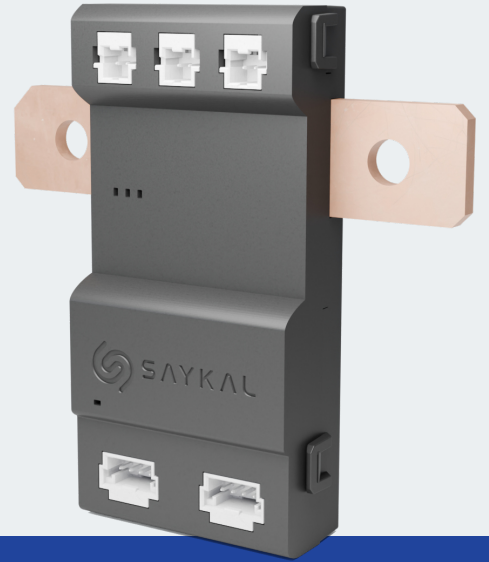


Intelligent Battery Shunt Sensor (IBSS)

Precise Measurement • Reliable • High Performance

Saykal Intelligent Battery Shunt Sensor provides high-precision current measurement functionalities for both low and high voltage battery platforms. It features a low TCR shunt resistor for stable accuracy under high temperature and high current conditions, and supports voltage measurement up to 1200 V for demanding HV systems. A CAN FD interface enables fast and robust communication with the vehicle network.



Low TCR
<10ppm

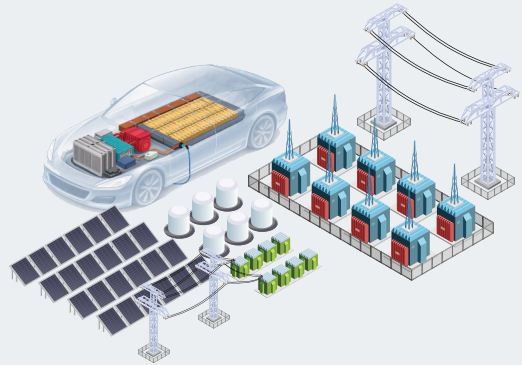
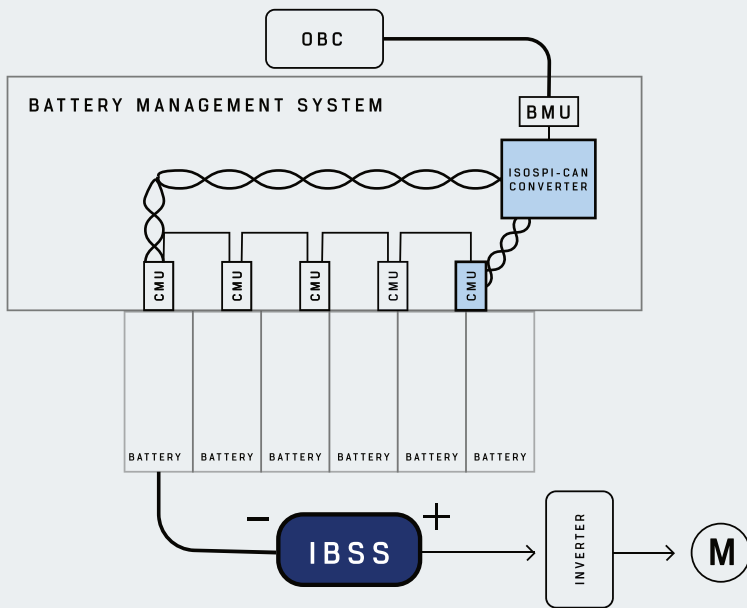
Firmware Update
FOTA

CAN/CANFD
Compatible

High Resolution
24 bit resolution

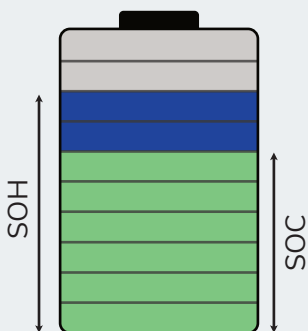
3 Channel Voltage Measurement
up to 1200V

Application Examples



Suitable for Various Energy Storage Applications

IBSS offers seamless integration and a wide measurement range by being strategically positioned between the battery and the inverter, enhancing the operational efficiency of the entire power electronics architecture.



Problem to Solution

The IBSS eliminates inaccurate data estimations the most critical challenge in battery systems by providing high-precision current and voltage measurements. This accuracy ensures pinpoint reliability in SOC (State of Charge) and SOH (State of Health) calculations, enabling dependable energy management.



TEMPERATURE



VOLTAGE



CURRENT

Thermal Supervision

Equipped with an integrated sensor for real-time temperature tracking, the IBSS features customizable threshold alarms. By providing proactive alerts during critical limit excursions, it prevents potential failures and maximizes overall system safety.